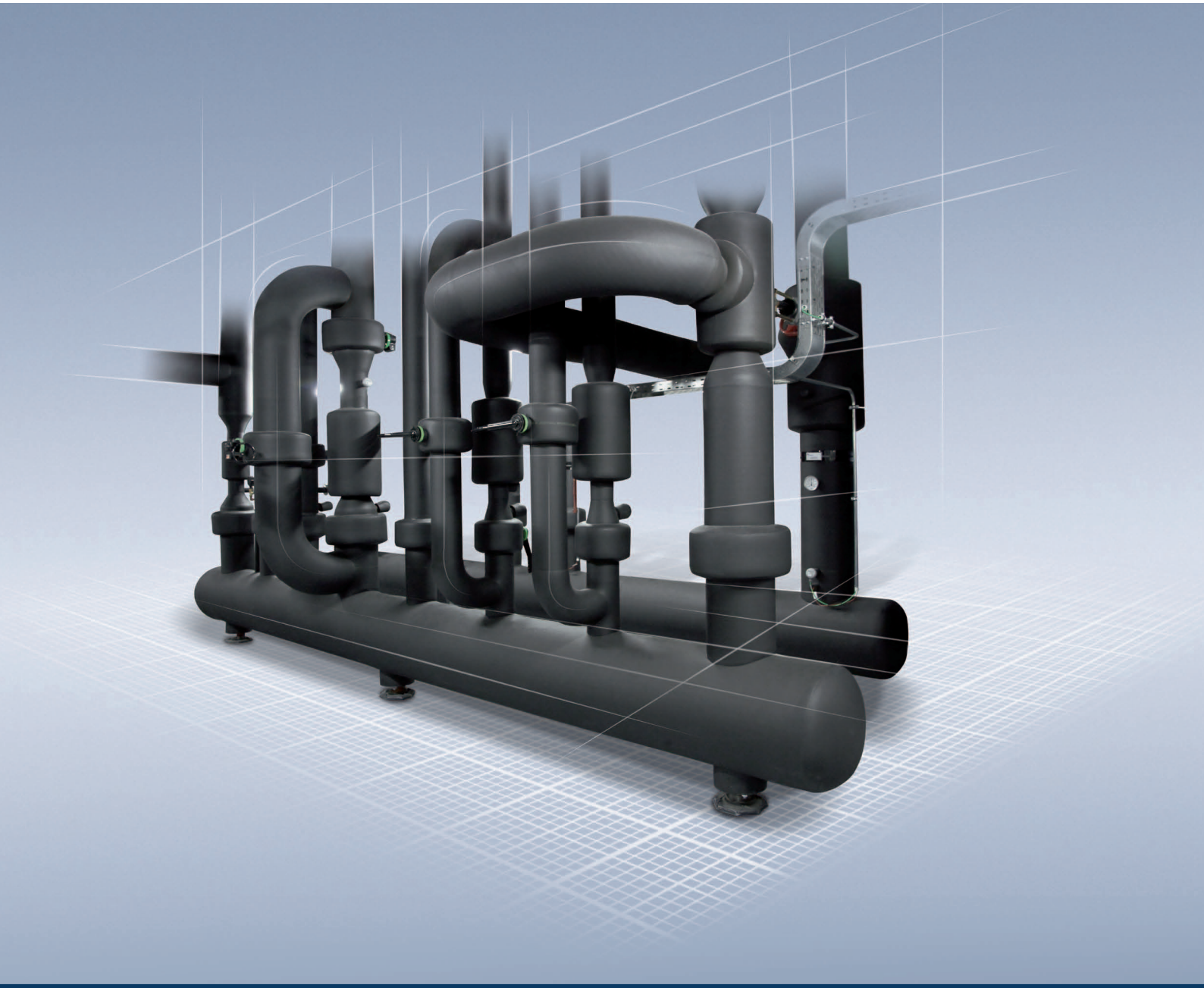




THE MAKERS OF
Armaflex®



Armaflex® MC

Submittal Sheet



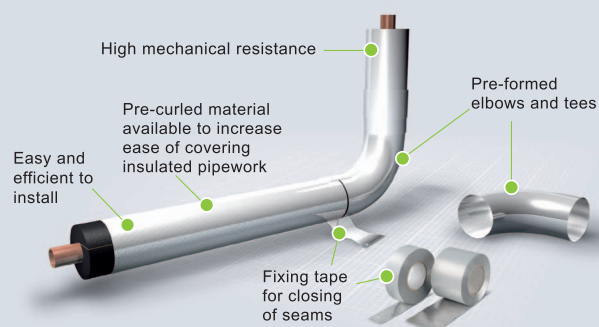
► Technical data

	Values	Remarks
Material	Foamed nitrile rubber	
Cell Structure	Closed cell	ASTM C 534
Maximum Service Temperature Minimum Service Temperature	+105°C (+85°C for flat surface) -50°C	For applications between -50°C and -200°C, please contact our Technical Department.
Thermal Conductivity	Mean Temp	-20°C -4°F
		0°C 32°F
		24°C 75°F
		32°C 90°F
		40°C 104°F
	W/(m.K)	≤0.032
		≤0.034
		≤0.036
		≤0.037
		≤0.039
	Btu·in/(h·ft²·°F)	≤0.23
		≤0.24
		≤0.25
		≤0.26
		≤0.27
Water Vapour Permeability	<0.02 perm-in. <2.8 x 10 ⁻¹¹ g/(m·s·Pa) Moisture resistance factor μ>7,000	ASTM E96 method A EN 12086 DIN 52615
Fire Performance	V-0, HB Self-extinguishing, no fire dripping	UL94, ASTM D 635
Water Absorption	≤3% by weight ≤0.05% by volume	ASTM D 1056 ASTM C 209
Ozone Resistance	No crack	ASTM D 1171
Corrosion on Copper or Steel Pipe	No corrosion	DIN 1988 part 7
Sound Absorption Coefficient	Up to 0.55 at 1000Hz	ISO 354 for 32mm sheet
Outdoor Application	Arma-Chek cladding, metal cladding or Armafinish is recommended	

► Arma-Chek Silver

Arma-Chek® Silver is a new generation of professional covering system that is designed to provide mechanical and weather protection for Armaflex. Arma-Chek® Silver is a multi-layer laminate of aluminum, coated with special UV protection.

Arma-Chek® Silver has high puncture and tear resistance, contains flame retardant, and can be used as an exterior facing on hot or cold insulation systems. This product also offers excellent vapour-barrier performance.



► Acoustic solutions

Armaflex has the unique capability of providing significant sound absorption while remaining completely closed cell. This can greatly benefit duct applications where aerodynamic and fan noise is a problem.



Insulating pipework with Armaflex prior to fixing ensures de-coupling from supporting and structural elements as well as other service installations. This prevents acoustic bridging, often responsible for pipework noise heard within a building.

► A complete range of insulation accessories



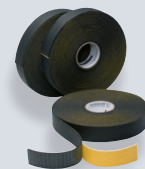
Armaflex 820 Adhesive

Armaflex 820 Adhesive is a black-coloured, low-viscosity adhesive. It is specially formulated to create uniform and safe bonding of seams and butt joints, and for adhering Armaflex to cleaned metal surfaces. Service temperature ranges from -50°C to +60°C, making it ideal for most chilled water and duct applications.



Armaflex 520 Adhesive

Armaflex 520 Adhesive is a yellow-coloured, low-viscosity adhesive. It is specially formulated to create uniform and safe bonding of seams and butt joints, and for adhering Armaflex to cleaned metal surfaces. Armaflex 520 is easy to apply, and dries quickly to speed installation. Service temperature ranges from -200°C to +105°C, making it suitable for a wide range of commercial and industrial applications.



Insulation Tape

Self adhesive Armaflex MC tape, available in 3mm and 6mm thickness, for insulating difficult shapes and areas that are not easily accessible. May be applied in multiple layers to build required thickness.

► Product range

Armaflex MC tubes, length 2 m, black colour



Armaflex ID	6 mm (1/4") Nominal Thickness		9 mm (3/8") Nominal Thickness		13 mm (1/2") Nominal Thickness		19 mm (3/4") Nominal Thickness	
	Nominal mm	Reference Code	Pcs/ Carton	Reference Code	Pcs/ Carton	Reference Code	Pcs/ Carton	Reference Code
6			MC-F-006	176	MC-H-006	90	MC-M-006	56
10			MC-F-010	132	MC-H-010	90	MC-M-010	46
12			MC-F-012	120	MC-H-012	72	MC-M-012	39
15	MC-D-015	143	MC-F-015	100	MC-H-015	64	MC-M-015	39
20	MC-D-020	110	MC-F-020	72	MC-H-020	56	MC-M-020	30
22	MC-D-022	100	MC-F-022	68	MC-H-022	53	MC-M-022	30
25	MC-D-025	81	MC-F-025	63	MC-H-025	42	MC-M-025	25
28	MC-D-028	68	MC-F-028	49	MC-H-028	36	MC-M-028	20
32			MC-F-032	42	MC-H-032	30	MC-M-032	20
35	MC-D-035	53	MC-F-035	42	MC-H-035	25	MC-M-035	18
42			MC-F-042	35	MC-H-042	25	MC-M-042	16
48			MC-F-048	28	MC-H-048	20	MC-M-048	16
54			MC-F-054	24	MC-H-054	20	MC-M-054	16
60			MC-F-060	24	MC-H-060	15	MC-M-060	12
67					MC-H-067	12	MC-M-067	10
73					MC-H-073	12	MC-M-073	9
76					MC-H-076	12	MC-M-076	9
80					MC-H-080	11	MC-M-080	8
89					MC-H-089	11	MC-M-089	8
105					MC-H-105	8	MC-M-105	6
114					MC-H-114	8	MC-M-114	6
140							MC-M-140	3

Armaflex MC tubes, length 2 m, black colour



Armaflex ID	25 mm (1") Nominal Thickness		32 mm (1 1/4") Nominal Thickness		38 mm (1 1/2") Nominal Thickness		50 mm (2") Nominal Thickness	
	Nominal mm	Reference Code	Pcs/ Carton	Reference Code	Pcs/ Carton	Reference Code	Pcs/ Carton	Reference Code
10	MC-R-010	28						
12	MC-R-012	28	MC-T-012	16				
15	MC-R-015	20	MC-T-015	16	MC-U-015	11		
20	MC-R-020	20	MC-T-020	12	MC-U-020	11		
22	MC-R-022	20	MC-T-022	12	MC-U-022	11	MC-V-022	6
25	MC-R-025	18	MC-T-025	12	MC-U-025	8	MC-V-025	6
28	MC-R-028	16	MC-T-028	12	MC-U-028	8	MC-V-028	6
32	MC-R-032	14	MC-T-032	12	MC-U-032	8	MC-V-032	5
35	MC-R-035	14	MC-T-035	9	MC-U-035	8	MC-V-035	5
42	MC-R-042	11	MC-T-042	8	MC-U-042	6	MC-V-042	4
48	MC-R-048	11	MC-T-048	6	MC-U-048	6	MC-V-048	4
54	MC-R-054	9	MC-T-054	6	MC-U-054	5	MC-V-054	4
60	MC-R-060	9	MC-T-060	6	MC-U-060	5	MC-V-060	4
67	MC-R-067	8	MC-T-067	5	MC-U-067	4	MC-V-067	4
73	MC-R-073	8	MC-T-073	4	MC-U-073	4	MC-V-073	4
76	MC-R-076	6	MC-T-076	4	MC-U-076	4	MC-V-076	3
80	MC-R-080	6	MC-T-080	4	MC-U-080	4	MC-V-080	3
89	MC-R-089	6	MC-T-089	4	MC-U-089	4	MC-V-089	3
93	MC-R-093	4	MC-T-093	3	MC-U-093	3	MC-V-093	3
102	MC-R-102	4	MC-T-102	3	MC-U-102	3	MC-V-102	3
105	MC-R-105	4	MC-T-105	3	MC-U-105	3	MC-V-105	3
114	MC-R-114	4	MC-T-114	3	MC-U-114	3	MC-V-114	2
140	MC-R-140	3	MC-T-140	2	MC-U-140	2	MC-V-140	2
168	MC-R-168	2	MC-T-168	2	MC-U-168	2	MC-V-168	2

Note: For ABS plastic pipes, only HT/Armaflex should be used.

► Product range

Armaflex MC continuous sheets



Insulation Thickness mm	Length m	Width 1 meter			Width 1.22 meter		
		Reference Code		Carton content m ²	Reference Code		Carton content m ²
		Continuous sheet	Self-adhesive		Continuous sheet	Self-adhesive	
6 (1/4")	15	MC-06100CS-15	MC-06100CS-15-T	15	MC-06122CS-15	MC-06122CS-15-T	18.3
9 (3/8")	10	MC-09100CS-10	MC-09100CS-10-T	10	MC-09122CS-10	MC-09122CS-10-T	12.2
13 (1/2")	8	MC-13100CS-8	MC-13100CS-8-T	8	MC-13122CS-8	MC-13122CS-8-T	9.76
19 (3/4")	6	MC-19100CS-6	MC-19100CS-6-T	6	MC-19122CS-6	MC-19122CS-6-T	7.32
25 (1")	4	MC-25100CS-4	MC-25100CS-4-T	4	MC-25122CS-4	MC-25122CS-4-T	4.88
32 (1 1/4")	3	MC-32100CS-3	MC-32100CS-3-T	3	-	-	-
38 (1 1/2")	3	MC-38100CS-3	MC-38100CS-3-T	3	-	-	-
50 (2")	3	MC-50100CS-3	MC-50100CS-3-T	3	-	-	-

Note: 1.4 m width rolls available on request.
16 mm thickness available on request.

Armaflex MC jumbo roll



Insulation Thickness mm	Width m	Length m	Carton content m ²	Sheet Reference Code	Self-adhesive Reference Code
9 (3/8")	1.22 (4 ft.)	15	18.3	MC-09x122x1500	MC-09x122x1500-T
13 (1/2")	1.22 (4 ft.)	15	18.3	MC-13x122x1500	MC-13x122x1500-T
19 (3/4")	1.22 (4 ft.)	15	18.3	MC-19x122x1500	MC-19x122x1500-T
25 (1")	1.22 (4 ft.)	15	18.3	MC-25x122x1500	MC-25x122x1500-T

Armaflex MC sheets



Insulation Thickness mm	Width m	Length m	Carton content pieces	Reference Code
13 (1/2")	0.91 (3 ft.)	1.22 (4 ft.)	20	MC-13x122x91
19 (3/4")	0.91 (3 ft.)	1.22 (4 ft.)	13	MC-19x122x91
25 (1")	0.91 (3 ft.)	1.22 (4 ft.)	10	MC-25x122x91
32 (1 1/4")	0.91 (3 ft.)	1.22 (4 ft.)	8	MC-32x122x91

Armaflex MC self-adhesive tape



Insulation thickness mm	Width mm	Length m	Carton content rolls	Reference Code
3 (1/8")	50 (2")	9.14 (30 ft.)	12	MC-03005CS-9.14-T
6 (1/4")	25 (1")	9.14 (30 ft.)	24	MC-0600025CS-15-T

Armaflex MC adhesives



Product	Volume	Reference Code
Armaflex 520 Adhesive	3.78-Litre / can	ADH-520-1G
Armaflex 820 Adhesive	700ML / can	ADH-820-700ML
Armaflex 820 Adhesive	3.78-Litre / can	ADH-820-1G